



part of the **cranbrook care** family

ACCOMMODATION GROUP 1 - KEY FEATURES STATEMENT

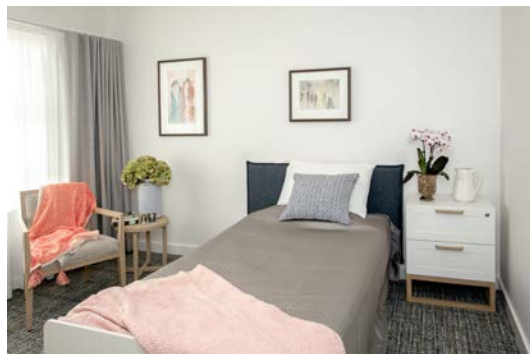
Private Rooms

The rooms in this Accommodation Group are D1-D14 which are situated on the ground floor in the Daffodil wing and F4, G1, G9, G11, G13 which are situated on the first floor in the Frangipani and Gumtree wing. Each room provides accommodation for one person. The room/s are between 20-24.9m² in size, very private, have wardrobe space, a telephone, individual air conditioning controls and a private ensuite. The fittings, finishes and furniture are good quality and in excellent condition.

Modern Facilities

The state of the art William Cape Gardens allows residents to relax in one of the sunny lounge areas, on the verandahs or in the landscaped courtyards. There are twelve beautifully appointed lounge areas and six dining rooms. Residents can enjoy a snack or beverage in our café or for those special family occasions, book a catered family gathering in our Function Centre or outdoor verandah areas. A fully equipped hairdressing salon is available for all residents on site.

Our interior architect has created a palette of contemporary colours for the walls and furnishings. The fittings, finishes and furniture are good quality and in excellent condition.





part of the **cranbrook care** family

ACCOMMODATION GROUP 1 - KEY FEATURES STATEMENT

Fees & Accommodation Payments

Accommodation Payment

A choice may be made available for payment of accommodation by a Refundable Accommodation Deposit (RAD) (lump sum payment), a Daily Accommodation Payment (DAP) (accrues daily and paid monthly) or both.

Accommodation Group 1 - Maximum Refundable Accommodation Deposit (RAD): \$400,000

Example

80% Refundable Accommodation Deposit and 20% Daily Accommodation Payment

Refundable Accommodation Deposit (RAD): \$320,000

Plus

Daily Accommodation Payment (DAP): \$8.85

William Cape Gardens Pty Ltd
40 Pearce Road, Kanwal NSW 2259
P 02 4392 4111 F 02 4392 4311
E contact@williamcapegardens.com.au
W www.williamcapegardens.com.au



part of the **cranbrook care** family

ACCOMMODATION GROUP 2 - KEY FEATURES STATEMENT

Private Rooms

These rooms are situated in the Elm wing on the ground floor which is a secure dementia specific area. Secure garden areas are accessible by all residents which encourages exercise and provide stimulation. Each room provides accommodation for one person. The room/s are approximately 21.7m² in size, very private, have wardrobe space, individual air conditioning controls and a private ensuite. The fittings, finishes and furniture are good quality and in excellent condition.

Modern Facilities

The state of the art William Cape Gardens allows residents to relax in one of the sunny lounge areas, on the verandahs or in the landscaped courtyards. There are twelve beautifully appointed lounge areas and six dining rooms. Residents can enjoy a snack or beverage in our café or for those special family occasions, book a catered family gathering in our Function Centre or outdoor verandah areas. A fully equipped hairdressing salon is available for all residents on site.

Our interior architect has created a palette of contemporary colours for the walls and furnishings. The fittings, finishes and furniture are good quality and in excellent condition.





part of the **cranbrook care** family

ACCOMMODATION GROUP 2 - KEY FEATURES STATEMENT

Fees & Accommodation Payments

Accommodation Payment

A choice may be made available for payment of accommodation by a Refundable Accommodation Deposit (RAD) (lump sum payment), a Daily Accommodation Payment (DAP) (accrues daily and paid monthly) or both.

Accommodation Group 2 - Maximum Refundable Accommodation Deposit (RAD): \$420,000

Example

80% Refundable Accommodation Deposit and 20% Daily Accommodation Payment

Refundable Accommodation Deposit (RAD): \$336,000

Plus

Daily Accommodation Payment (DAP): \$9.30

William Cape Gardens Pty Ltd
40 Pearce Road, Kanwal NSW 2259
P 02 4392 4111 F 02 4392 4311
E contact@williamcapegardens.com.au
W www.williamcapegardens.com.au



part of the **cranbrook care** family

ACCOMMODATION GROUP 3 - KEY FEATURES STATEMENT

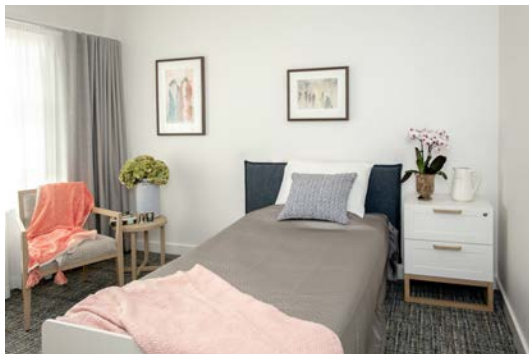
Private Rooms

The rooms in this accommodation group are C1-C8 and C10-C16 and are situated in the Camellia wing on the ground floor. Secure garden areas are accessible by all residents which encourages exercise and provide stimulation. Each room provides accommodation for one person. The room/s are approximately 21.7-24.9m² in size, very private, have wardrobe space, a telephone, individual air conditioning controls and a private ensuite. The fittings, finishes and furniture are good quality and in excellent condition.

Modern Facilities

The state of the art William Cape Gardens allows residents to relax in one of the sunny lounge areas, on the verandahs or in the landscaped courtyards. There are twelve beautifully appointed lounge areas and six dining rooms. Residents can enjoy a snack or beverage in our café or for those special family occasions, book a catered family gathering in our Function Centre or outdoor verandah areas. A fully equipped hairdressing salon is available for all residents on site.

Our interior architect has created a palette of contemporary colours for the walls and furnishings. The fittings, finishes and furniture are good quality and in excellent condition.





part of the **cranbrook care** family

ACCOMMODATION GROUP 3 - KEY FEATURES STATEMENT

Fees & Accommodation Payments

Accommodation Payment

A choice may be made available for payment of accommodation by a Refundable Accommodation Deposit (RAD) (lump sum payment), a Daily Accommodation Payment (DAP) (accrues daily and paid monthly) or both.

Accommodation Group 3 - Maximum Refundable Accommodation Deposit (RAD): \$420,000

Example

80% Refundable Accommodation Deposit and 20% Daily Accommodation Payment

Refundable Accommodation Deposit (RAD): \$336,000

Plus

Daily Accommodation Payment (DAP): \$9.30

William Cape Gardens Pty Ltd
40 Pearce Road, Kanwal NSW 2259
P 02 4392 4111 F 02 4392 4311
E contact@williamcapegardens.com.au
W www.williamcapegardens.com.au



part of the **cranbrook care** family

ACCOMMODATION GROUP 4 - KEY FEATURES STATEMENT

Private Rooms

The rooms in this Accommodation Group are C9 in the Camellia wing on the ground floor, G8, G10 and G12 in Gumtree wing and F1-3, F5-F16 in the Frangipani wing which are situated on the first floor. Each room provides accommodation for one person. The room/s are extra large, approximately 21.7-24.7m² in size, very private, have wardrobe space, a telephone, individual air conditioning controls and a private ensuite. The fittings, finishes and furniture are good quality and in excellent condition.

Modern Facilities

The state of the art William Cape Gardens allows residents to relax in one of the sunny lounge areas, on the verandahs or in the landscaped courtyards. There are twelve beautifully appointed lounge areas and six dining rooms. Residents can enjoy a snack or beverage in our café or for those special family occasions, book a catered family gathering in our Function Centre or outdoor verandah areas. A fully equipped hairdressing salon is available for all residents on site.

Our interior architect has created a palette of contemporary colours for the walls and furnishings. The fittings, finishes and furniture are good quality and in excellent condition.





part of the **cranbrook care** family

ACCOMMODATION GROUP 4 - KEY FEATURES STATEMENT

Fees & Accommodation Payments

Accommodation Payment

A choice may be made available for payment of accommodation by a Refundable Accommodation Deposit (RAD) (lump sum payment), a Daily Accommodation Payment (DAP) (accrues daily and paid monthly) or both.

Accommodation Group 4 - Maximum Refundable Accommodation Deposit (RAD): \$450,000

Example

80% Refundable Accommodation Deposit and 20% Daily Accommodation Payment

Refundable Accommodation Deposit (RAD): \$360,000

Plus

Daily Accommodation Payment (DAP): \$9.96

William Cape Gardens Pty Ltd
40 Pearce Road, Kanwal NSW 2259
P 02 4392 4111 F 02 4392 4311
E contact@williamcapegardens.com.au
W www.williamcapegardens.com.au



part of the **cranbrook care** family

ACCOMMODATION GROUP 5 - KEY FEATURES STATEMENT

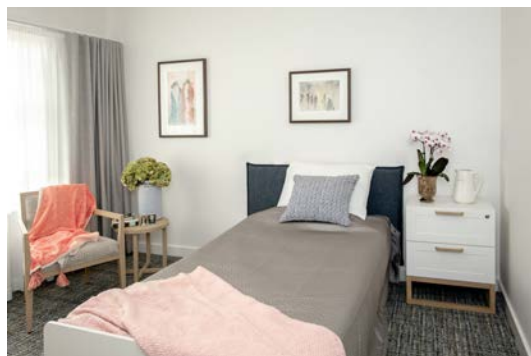
Private Rooms

The rooms in this accommodation group include A8, A10, A12, A14, A16, A18, B1- B15. These rooms are situated in the Acacia and Banksia wings on the ground floor and are offered on an Extra Services basis. This means higher standards of accommodation such as provision of a television and arm chair, increased entertainment such as wired internet connection and in-house Foxtel channels as well as higher standards of meals and services. Each room provides accommodation for one person. The room/s are between 21.7-24.9m² in size, very private, have wardrobe space, a telephone, individual air conditioning controls and a private ensuite. The fittings, finishes and furniture are good quality and in excellent condition.

Modern Facilities

The state of the art William Cape Gardens allows residents to relax in one of the sunny lounge areas, on the verandahs or in the landscaped courtyards. There are twelve beautifully appointed lounge areas and six dining rooms. Residents can enjoy a snack or beverage in our café or for those special family occasions, book a catered family gathering in our Function Centre or outdoor verandah areas. A fully equipped hairdressing salon is available for all residents on site.

Our interior architect has created a palette of contemporary colours for the walls and furnishings. The fittings, finishes and furniture are good quality and in excellent condition.





part of the **cranbrook care** family

ACCOMMODATION GROUP 5 - KEY FEATURES STATEMENT

Fees & Accommodation Payments

Accommodation Payment

A choice may be made available for payment of accommodation by a Refundable Accommodation Deposit (RAD) (lump sum payment), a Daily Accommodation Payment (DAP) (accrues daily and paid monthly) or both.

Accommodation Group 6 - Maximum Refundable Accommodation Deposit (RAD): \$475,000

Example

80% Refundable Accommodation Deposit and 20% Daily Accommodation Payment

Refundable Accommodation Deposit (RAD): \$380,000

Plus

Daily Accommodation Payment (DAP): \$10.52

Extra Service Fee

The rooms in this Accommodation Group are Extra Service rooms, approved by the Department of Health and thereby provide additional 'hotel' type services or lifestyle extras, including higher standards of accommodation and food choices. The Extra Service Fee is \$41.69 per day.

William Cape Gardens Pty Ltd
40 Pearce Road, Kanwal NSW 2259
P 02 4392 4111 F 02 4392 4311
E contact@williamcapegardens.com.au
W www.williamcapegardens.com.au



part of the **cranbrook care** family

ACCOMMODATION GROUP 6 - KEY FEATURES STATEMENT

Private Rooms

The room in this Accommodation Group is G14 & F17 and it is situated on the first floor. The rooms provide accommodation for one person. The rooms are extra large, approximately 25-27.5m² in size, very private, have spacious wardrobe space, a telephone, individual air conditioning controls, private balcony and a private ensuite. The fittings, finishes and furniture are good quality and in excellent condition.

Modern Facilities

The state of the art William Cape Gardens allows residents to relax in one of the sunny lounge areas, on the verandahs or in the landscaped courtyards. There are twelve beautifully appointed lounge areas and six dining rooms. Residents can enjoy a snack or beverage in our café or for those special family occasions, book a catered family gathering in our Function Centre or outdoor verandah areas. A fully equipped hairdressing salon is available for all residents on site.

Our interior architect has created a palette of contemporary colours for the walls and furnishings. The fittings, finishes and furniture are good quality and in excellent condition.





part of the **cranbrook care** family

ACCOMMODATION GROUP 6 - KEY FEATURES STATEMENT

Fees & Accommodation Payments

Accommodation Payment

A choice may be made available for payment of accommodation by a Refundable Accommodation Deposit (RAD) (lump sum payment), a Daily Accommodation Payment (DAP) (accrues daily and paid monthly) or both.

Accommodation Group 5 - Maximum Refundable Accommodation Deposit (RAD): \$550,000

Example

80% Refundable Accommodation Deposit and 20% Daily Accommodation Payment

Refundable Accommodation Deposit (RAD): \$440,000

Plus

Daily Accommodation Payment (DAP): \$12.18

William Cape Gardens Pty Ltd

40 Pearce Road, Kanwal NSW 2259

P 02 4392 4111 F 02 4392 4311

E contact@williamcapegardens.com.au

W www.williamcapegardens.com.au



part of the **cranbrook care** family

ACCOMMODATION GROUP 7 - KEY FEATURES STATEMENT

Private Rooms

These rooms are situated in the Acacia wing (A1-A7, A9, A11, A13, A15, A17, A19) on the ground floor, feature private courtyards to the east overlooking manicured gardens and are offered on an Extra Services basis. This means higher standards of accommodation such as provision of a television and arm chair, increased entertainment such as wired internet connection and in-house Foxtel channels as well as higher standards of meals and services. Each room provides accommodation for one person. The room/s are approximately 21.7-23.5m² in size, very private, have wardrobe space, a telephone, individual air conditioning controls and a private ensuite. The fittings, finishes and furniture are good quality and in excellent condition.

Modern Facilities

The state of the art William Cape Gardens allows residents to relax in one of the sunny lounge areas, on the verandahs or in the landscaped courtyards. There are twelve beautifully appointed lounge areas and six dining rooms. Residents can enjoy a snack or beverage in our café or for those special family occasions, book a catered family gathering in our Function Centre or outdoor verandah areas. A fully equipped hairdressing salon is available for all residents on site.

Our interior architect has created a palette of contemporary colours for the walls and furnishings. The fittings, finishes and furniture are good quality and in excellent condition.





part of the **cranbrook care** family

ACCOMMODATION GROUP 7 - KEY FEATURES STATEMENT

Fees & Accommodation Payments

Accommodation Payment

A choice may be made available for payment of accommodation by a Refundable Accommodation Deposit (RAD) (lump sum payment), a Daily Accommodation Payment (DAP) (accrues daily and paid monthly) or both.

Accommodation Group 7 - Maximum Refundable Accommodation Deposit (RAD): \$550,000

Example

80% Refundable Accommodation Deposit and 20% Daily Accommodation Payment

Refundable Accommodation Deposit (RAD): \$440,000

Plus

Daily Accommodation Payment (DAP): \$12.18

Extra Service Fee

The rooms in this Accommodation Group are Extra Service rooms, approved by the Department of Health and thereby provide additional 'hotel' type services or lifestyle extras, including higher standards of accommodation and food choices. The Extra Service Fee is \$41.69 per day.

William Cape Gardens Pty Ltd
40 Pearce Road, Kanwal NSW 2259
P 02 4392 4111 F 02 4392 4311
E contact@williamcapegardens.com.au
W www.williamcapegardens.com.au



part of the **cranbrook care** family

ACCOMMODATION GROUP 8 - KEY FEATURES STATEMENT

Shared Rooms

The rooms in this Accommodation Group are G2, G3, G4, G5, G6 and G7 (Gumtree wing). Each room provides accommodation for a maximum of two people. The part room/s are between 14.7m² in size, very private, have wardrobe space, a telephone, individual air conditioning controls and a private ensuite. All rooms also have ceiling fans. The fittings, finishes and furniture are good quality and in excellent condition.

Modern Facilities

The state of the art William Cape Gardens allows residents to relax in one of the sunny lounge areas, on the verandahs or in the landscaped courtyards. There are twelve beautifully appointed lounge areas and six dining rooms. Residents can enjoy a snack or beverage in our café or for those special family occasions, book a catered family gathering in our Function Centre or outdoor verandah areas. A fully equipped hairdressing salon is available for all residents on site.

Our interior architect has created a palette of contemporary colours for the walls and furnishings. The fittings, finishes and furniture are good quality and in excellent condition.





part of the **cranbrook care** family

ACCOMMODATION GROUP 8 - KEY FEATURES STATEMENT

Fees & Accommodation Payments

Accommodation Payment

A choice may be made available for payment of accommodation by a Refundable Accommodation Deposit (RAD) (lump sum payment), a Daily Accommodation Payment (DAP) (accrues daily and paid monthly) or both.

Accommodation Group 9 - Maximum Refundable Accommodation Deposit (RAD): \$300,000

Example

80% Refundable Accommodation Deposit and 20% Daily Accommodation Payment

Refundable Accommodation Deposit (RAD): \$240,000

Plus

Daily Accommodation Payment (DAP): \$6.64

William Cape Gardens Pty Ltd
40 Pearce Road, Kanwal NSW 2259
P 02 4392 4111 F 02 4392 4311
E contact@williamcapegardens.com.au
W www.williamcapegardens.com.au



part of the **cranbrook care** family

ACCOMMODATION GROUP 9 - KEY FEATURES STATEMENT

Shared Rooms

These rooms A6 and B4 provide accommodation for a maximum of two people. The rooms are offered on an Extra Services basis which means higher standards of accommodation such as provision of a television and arm chair, increased entertainment such as wired internet connection and in-house Foxtel channels as well as higher standards of meals and services. The part room is 16.2m² in size, very private, has wardrobe space, individual air conditioning controls and a private ensuite. The fittings, finishes and furniture are good quality and in excellent condition.

Modern Facilities

The state of the art William Cape Gardens allows residents to relax in one of the sunny lounge areas, on the verandahs or in the landscaped courtyards. There are twelve beautifully appointed lounge areas and six dining rooms. Residents can enjoy a snack or beverage in our café or for those special family occasions, book a catered family gathering in our Function Centre or outdoor verandah areas. A fully equipped hairdressing salon is available for all residents on site.

Our interior architect has created a palette of contemporary colours for the walls and furnishings. The fittings, finishes and furniture are good quality and in excellent condition.





part of the **cranbrook care** family

ACCOMMODATION GROUP 9 - KEY FEATURES STATEMENT

Fees & Accommodation Payments

Accommodation Payment

A choice may be made available for payment of accommodation by a Refundable Accommodation Deposit (RAD) (lump sum payment), a Daily Accommodation Payment (DAP) (accrues daily and paid monthly) or both.

Accommodation Group 11- Maximum Refundable Accommodation Deposit (RAD): \$350,000

Example

80% Refundable Accommodation Deposit and 20% Daily Accommodation Payment

Refundable Accommodation Deposit (RAD): \$280,000

Plus

Daily Accommodation Payment (DAP): \$7.75

Extra Service Fee

The rooms in this Accommodation Group are Extra Service rooms, approved by the Department of Health and thereby provide additional 'hotel' type services or lifestyle extras, including higher standards of accommodation and food choices. The Extra Service Fee is \$41.69 per day.

William Cape Gardens Pty Ltd
40 Pearce Road, Kanwal NSW 2259
P 02 4392 4111 F 02 4392 4311
E contact@williamcapegardens.com.au
W www.williamcapegardens.com.au



part of the **cranbrook care** family

ACCOMMODATION GROUP 10 - KEY FEATURES STATEMENT

Shared Rooms

This room F17 in the Frangipani wing on the first floor provides accommodation for a maximum of two people. The room is 13.8m² in size, very private, has wardrobe space, individual air conditioning controls and a private ensuite. The fittings, finishes and furniture are good quality and in excellent condition.

Modern Facilities

The state of the art William Cape Gardens allows residents to relax in one of the sunny lounge areas, on the verandahs or in the landscaped courtyards. There are twelve beautifully appointed lounge areas and six dining rooms. Residents can enjoy a snack or beverage in our café or for those special family occasions, book a catered family gathering in our Function Centre or outdoor verandah areas. A fully equipped hairdressing salon is available for all residents on site.

Our interior architect has created a palette of contemporary colours for the walls and furnishings. The fittings, finishes and furniture are good quality and in excellent condition.





part of the **cranbrook care** family

ACCOMMODATION GROUP 10 - KEY FEATURES STATEMENT

Fees & Accommodation Payments

Accommodation Payment

A choice may be made available for payment of accommodation by a Refundable Accommodation Deposit (RAD) (lump sum payment), a Daily Accommodation Payment (DAP) (accrues daily and paid monthly) or both.

Accommodation Group 10 - Maximum Refundable Accommodation Deposit (RAD): \$350,000

Example

80% Refundable Accommodation Deposit and 20% Daily Accommodation Payment

Refundable Accommodation Deposit (RAD): \$280,000

Plus

Daily Accommodation Payment (DAP): \$7.75

William Cape Gardens Pty Ltd
40 Pearce Road, Kanwal NSW 2259
P 02 4392 4111 F 02 4392 4311
E contact@williamcapegardens.com.au
W www.williamcapegardens.com.au